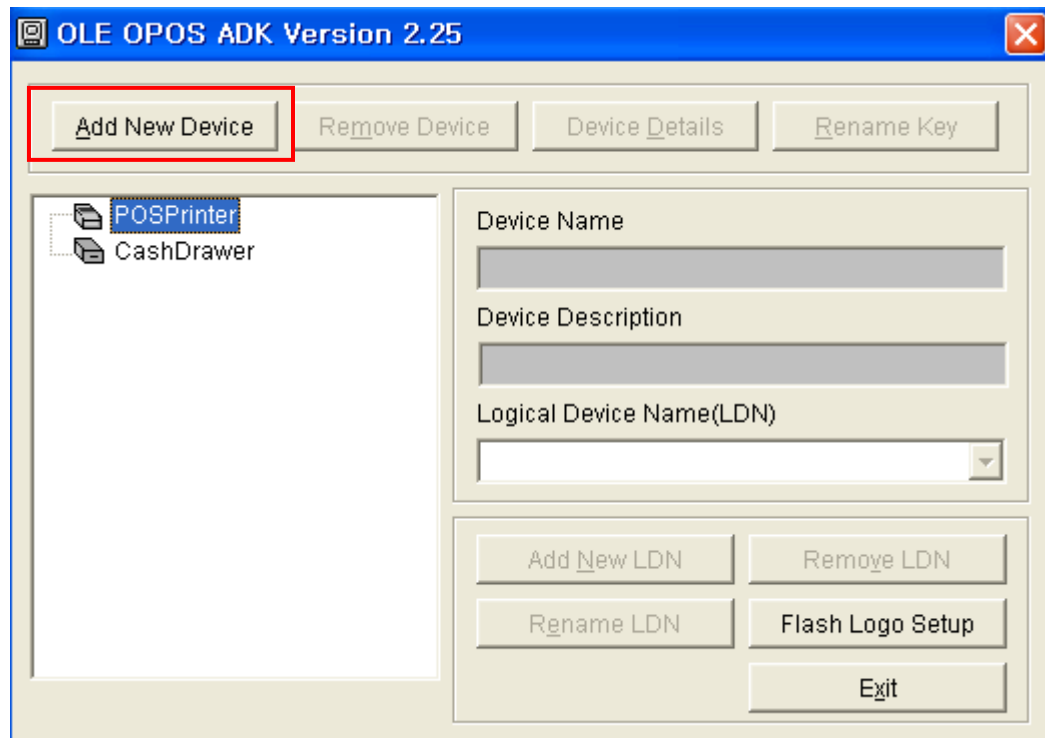


POSfor.NET setup procedure.

1. Install and setup the OLE POS.

- 1.1. First of all, install OLE POS(**latest version**)
- 1.2. After the installation is finished, Start → Programs → OLE OPOS x.xx → Execute SetupPOS. Then you will see the below image..



- 1.3. Select “ POSPrinter “ then Click “ Add New Device “ button.
Choose Thermal in “Select Device Name” , then Click the combo box of Select Device Type. You will see the below image.
In the name of Select Device Type, it will express about the interface .

(EX)

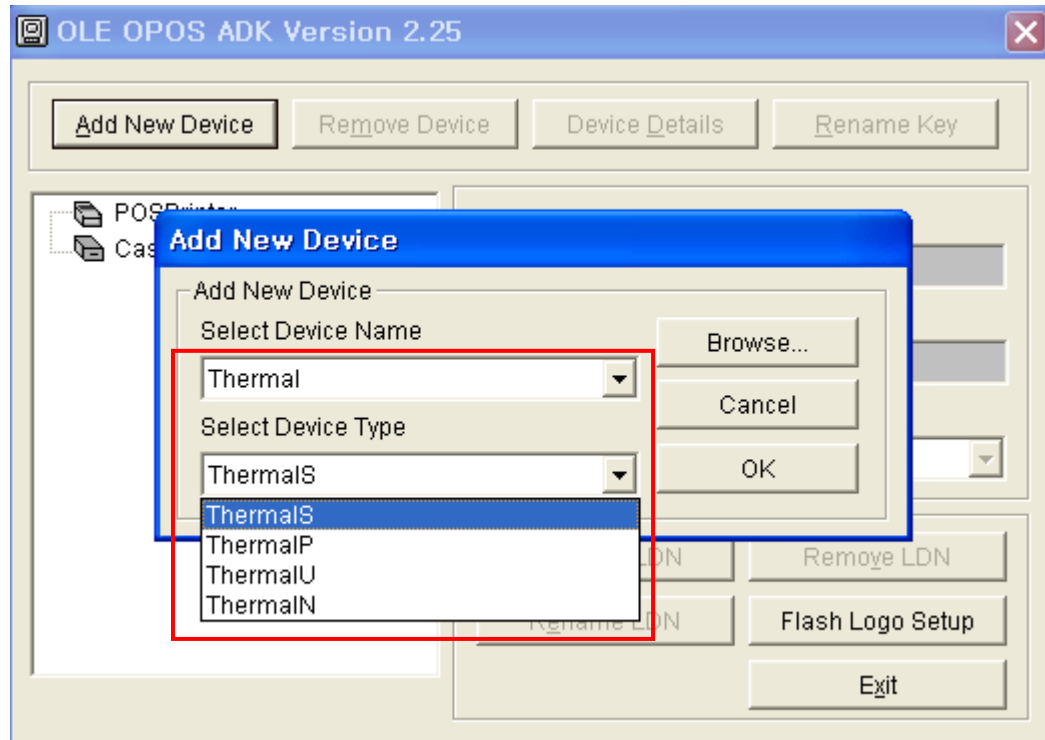
ThermalS → Serial Interface.

ThermalP → Parallel Interface.

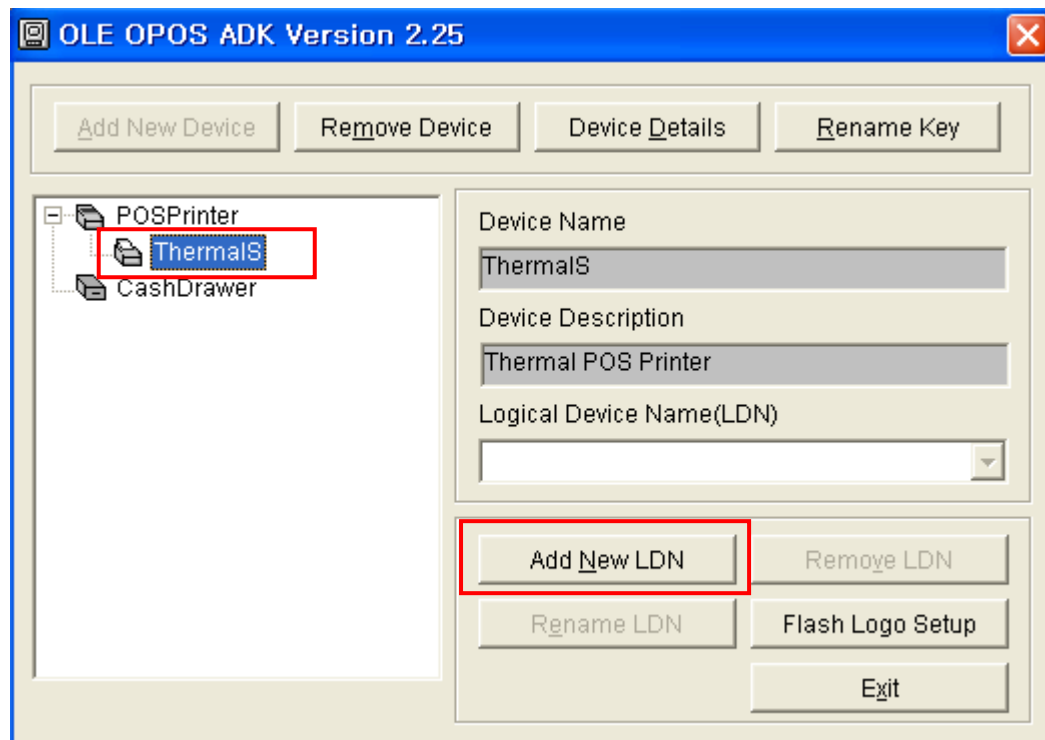
ThermalN → Ethernet Interface.

ThermalU → USB.

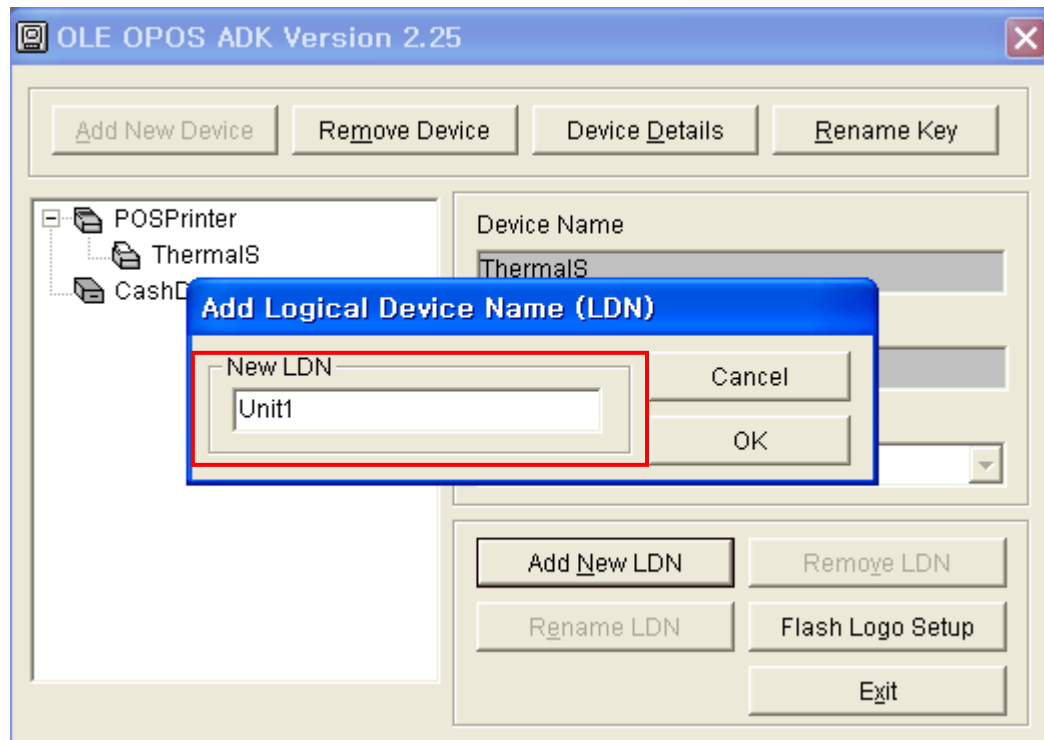
Select “ Select Device Type “ which you want to connect. Then Click “OK”.



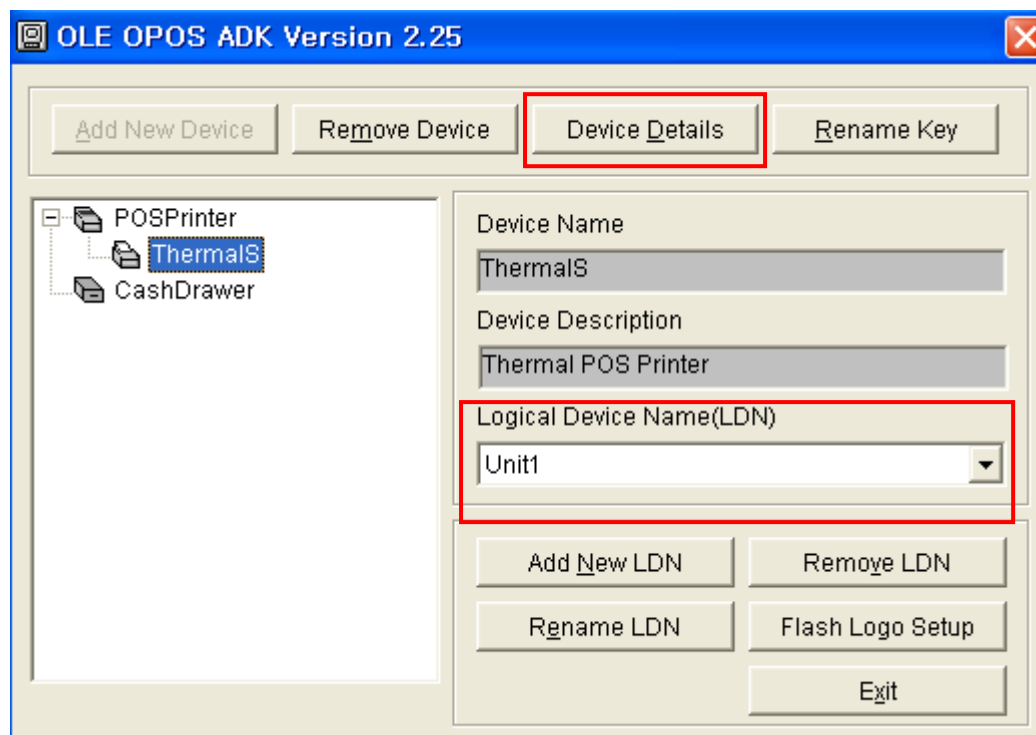
- 1.4. If you select the Serial interface, you will see the image as below.
Select “ThermalS” , then Click “Add New LDN” button.



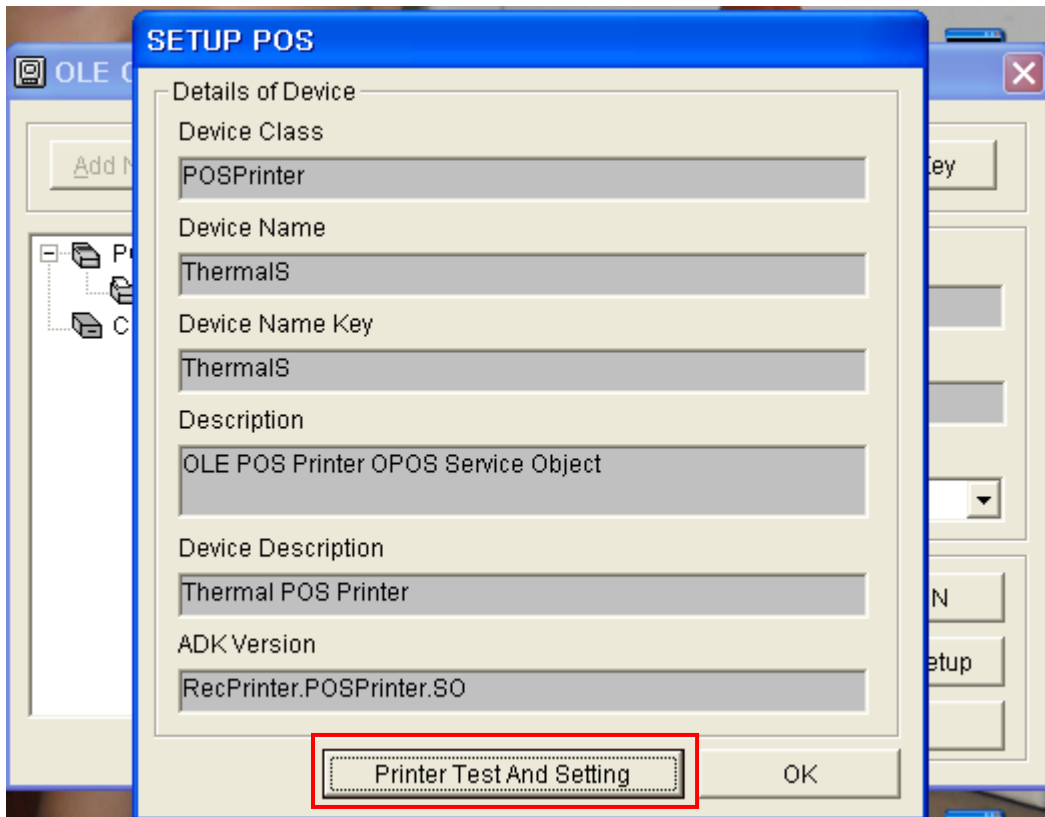
1.5. In the below image, input the Logical Device Name, then Click “OK”.



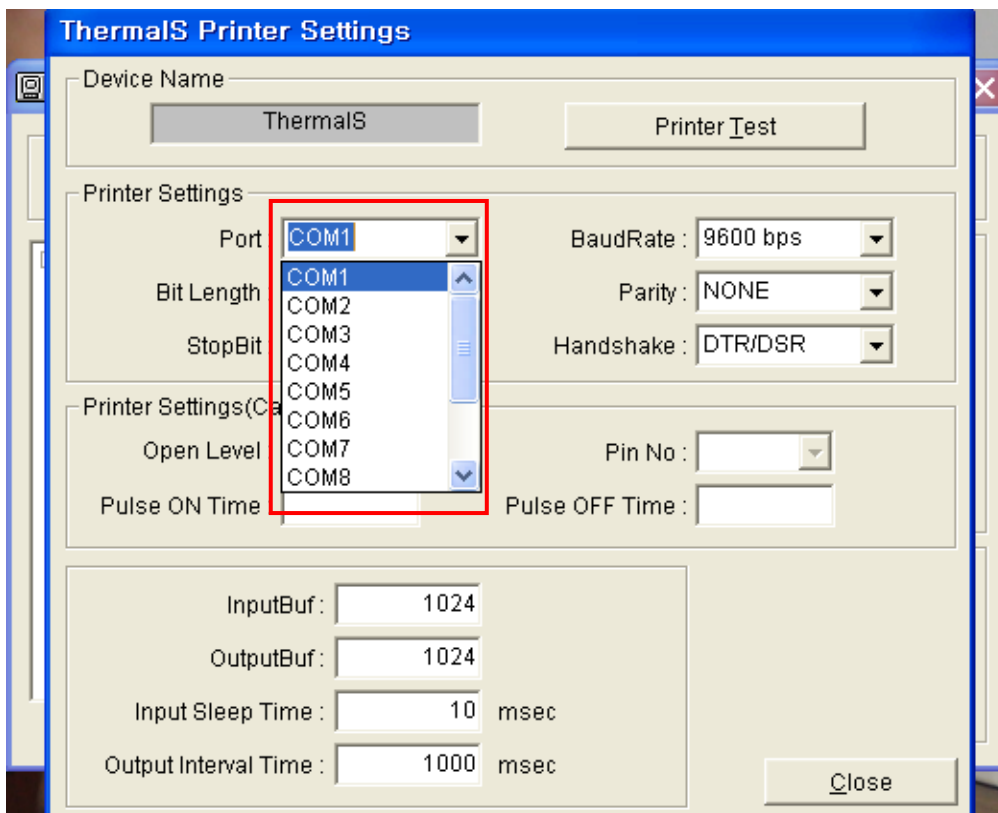
1.6. Click the “Device Details” button.



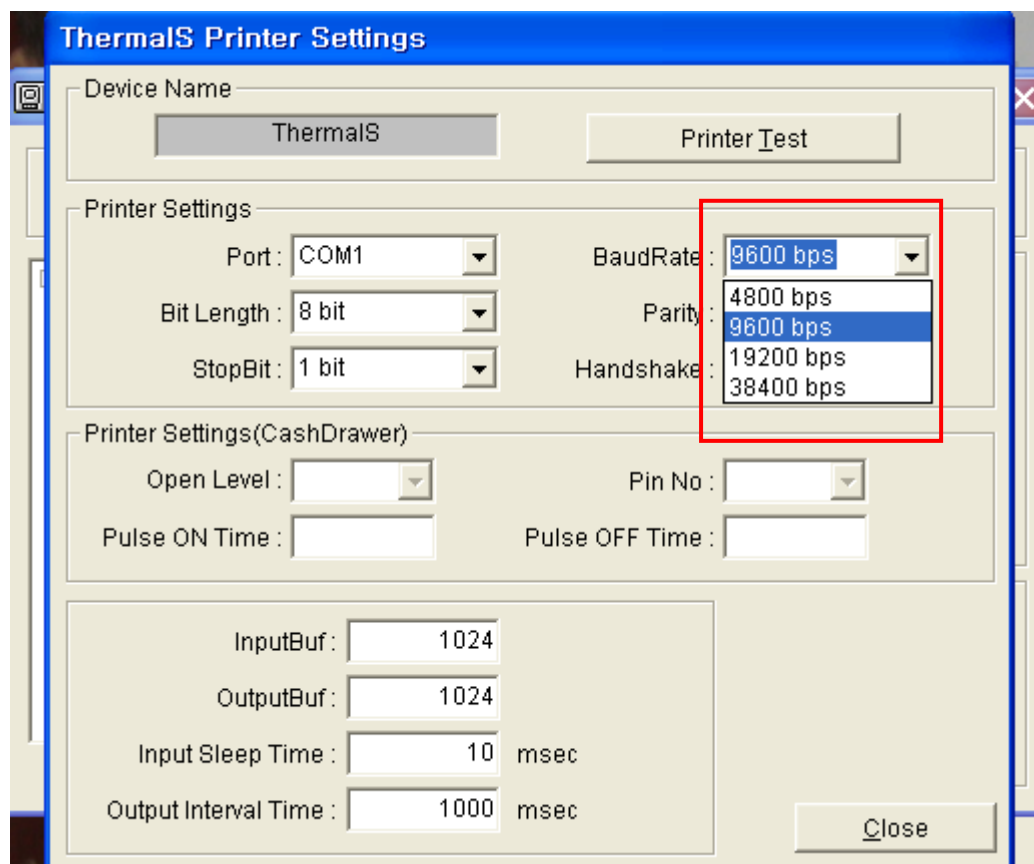
1.7. Click “Printer Test And Setting” button.



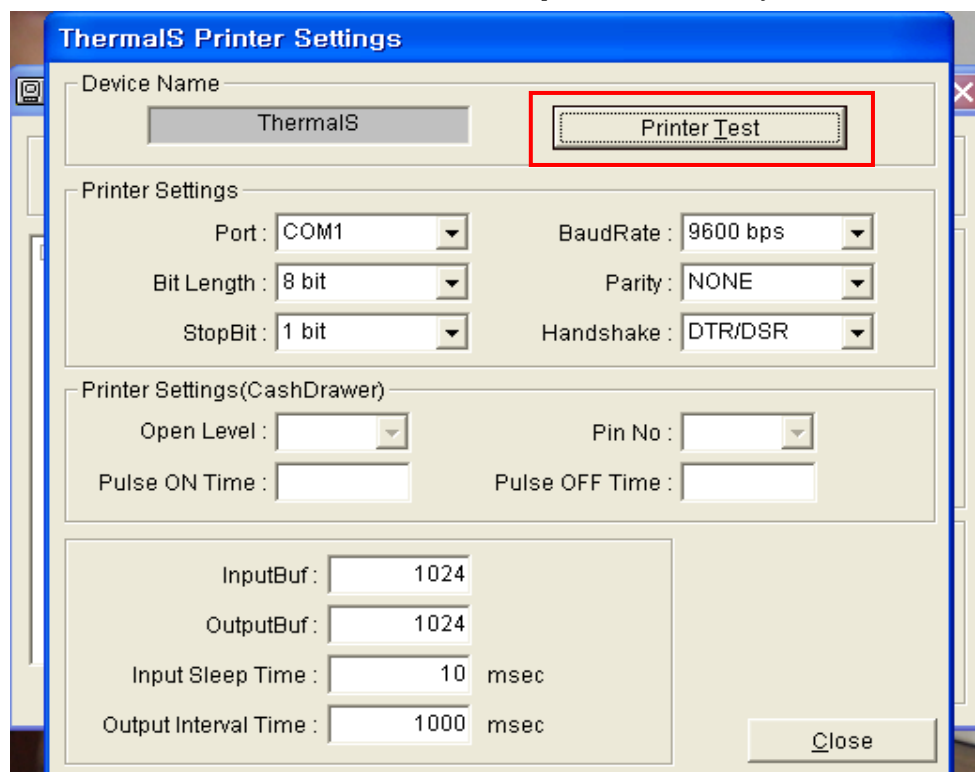
1.8. Choose the port which you want in Serial Interface.



1.9. Choose the baudrate which you want in Serial Interface.



1.10. Click the “Printer Test” button to print out correctly.



2. Install the Microsoft POSfor.NET SDK in
“2. Microsoft POSfor.NET SDK “Directory.
– Install the POSfor.NET SDK version what you want to install.
3. Execute POSfor.NET sample program and test in “3. POSfor.NET
Sample” Directory .

